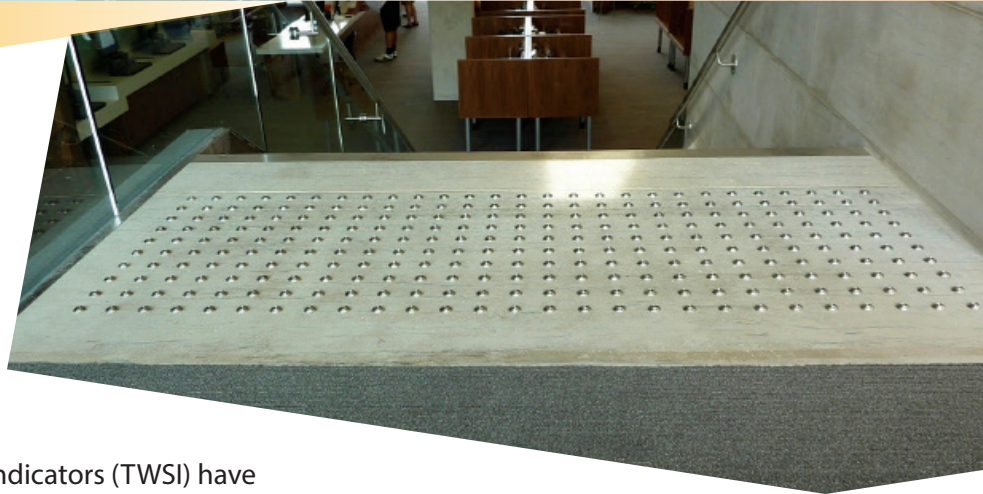


Elegance meets Functionality



Advantage® ONE Tactile Walking Surface Indicators (TWSI) have been designed for all interior accessibility solutions. Advantage® ONE Tactile indicators are machined from a solid piece of 316L Marine Grade Stainless Steel, and proves to be an aesthetically pleasing, strong, and durable material. Advantage® ONE incorporates an integral texture in the stainless steel for permanent slip resistance. Our products have undergone a rigorous series of tests to ensure that they meet and exceed guidelines developed by the AODA, CSA, ISO, and provincial and national building codes. Advantage® ONE TWSI products offer the lowest lifecycle cost, and eliminates long term safety concerns and accessibility limitations.

Tactile Walking Surface Indicators (TWSI) products for the following and many more applications:

- Top of Stair Landings
- Revolving Door Approaches
- Wheelchair Ramps
- Parking Areas
- Pools
- Escalator Approaches
- Transit Platforms
- Multi-Modal Transit Stations

COMPLIANCE

Kinesik Engineered Products Incorporated is in full compliance with Canadian Accessibility Codes. The full product range of Kinesik tactile walking surface indicators meet the most recent AODA, CSA, ISO, provincial and national building codes. Kinesik Engineered Products Incorporated is your one stop source for all tactile systems for internal and external applications. Only Kinesik provides a complete range of products designed for safety, convenience and code compliance.

See back for details.



PRODUCT MATERIALS

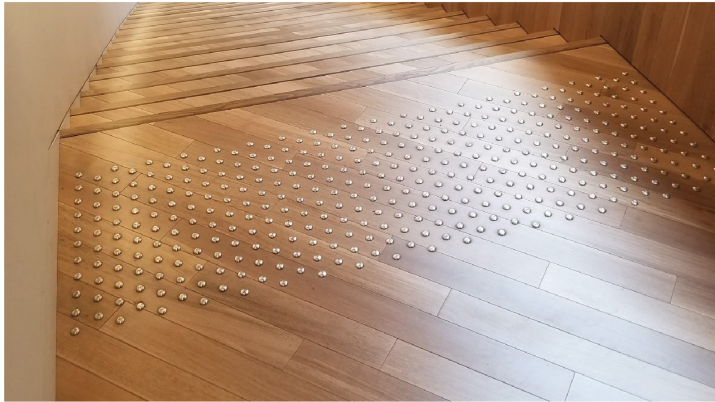
- Stainless Steel
- Stainless Steel, Carborundum Insert
- Stainless Steel, Physical Vapor Deposition Coating (PVD)
- Aluminum
- Aluminum, Anodized Coating
- Brass

Domes come in the following styles:

- Concentric Rings Pattern
- Crosshatch Pattern
- Carborundum - Non-Slip

PRODUCT FEATURES

- Innovative adhesive capture design
- Optimum anti-slip design
- Resistant to heavy traffic abuse and maintenance machinery
- 5 year manufacturer's warranty



PROFESSIONAL ASSOCIATIONS

Kinesik is proud to be a member of the following organisations



PRODUCT OPTIONS

- Stainless Steel
- Stainless Steel, Carborundum Insert
- Stainless Steel, Physical Vapor Deposition Coating (PVD)
- Aluminum
- Aluminum, Anodized Coating
- Brass

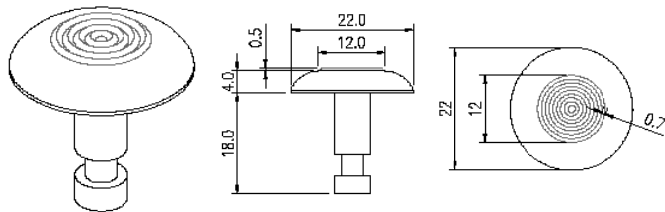
APPLICATIONS

- Tactile Attention Indicator Truncated Domes
- Tops of stairs and ramps
 - Surrounding pools
 - An unprotected drop off edge, such as a transit platform where the change in elevation is greater than 250mm or the slope is steeper than in a ratio of 1:3 (33%).

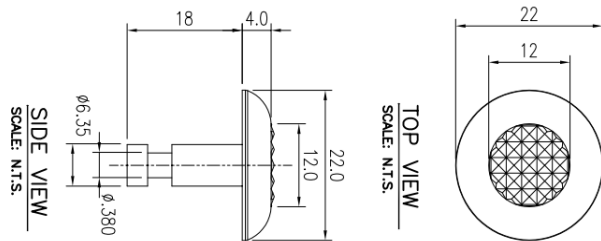
Advantage® ONE Attention Indicator Domes



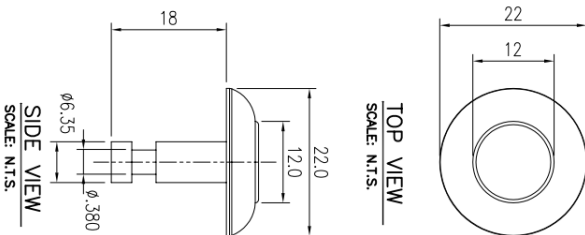
Contentric Rings



Cross Hatch



Carborundum



ADVANTAGE ONE-INDIVIDUAL DOMES

DOMES DIA.	PRODUCT CODE	CENTRE DOME PATTERN	MATERIAL
22	ADV-D-1281-N	Contentric Rings	Stainless Steel 316L
23	ADV-D-2281-N	Cross Hatch	Stainless Steel 316L
22	ADV-D-5281-N	Black Carborundum	Stainless Steel 316L
23	ADV-D-7281-N	Yellow Carborundum	Stainless Steel 316L
22	ADV-D-1281-BK PVD	Contentric Rings	SS PVD Coated 316L
22	ADV-D-1283-N	Contentric Rings	Brass, Non-Polished
22	ADV-D-1282-C	Contentric Rings	Aluminum, Clear
22	ADV-D-1283-BK	Contentric Rings	Aluminum, Black
22	ADV-D-1282-RD	Contentric Rings	Aluminum, Red

KINESIK Engineered Products Incorporated

2213 North Sheridan Way
Mississauga, Ontario L5K 1A3
Canada

Phone: 855.364.7763
Fax: 800.769.4463
www.kinesik.ca

Distributor